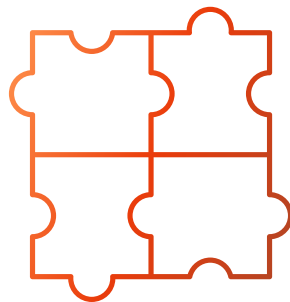




Joining Lumen Learning Trust

What conversion will mean for your governing board





School governors are an integral part of the governance structure. Sharing their local knowledge, producing triangulating evidence and constructive challenge to school leaders are the key components of the role.

Below we answer some key questions about conversion in relation to your governing board.

What will we call ourselves?

Terminology will change to mirror the governance structure of Lumen Learning Trust (LLT). LLT is run by what we refer to as a board of directors, (referred to as 'Trustees' in The Academy Handbook).

Directors aren't able to effectively oversee every part of LLT so they delegate to sub-committees to act on their behalf. Sub-committees are made up of directors, headteachers and key Central team staff members.

One of the sub-committees is responsible for looking at a school's performance - this is called the Local Governing Board, or LGB as we refer to it. Each school has their own LGB and on conversion your current Board will become an LGB.



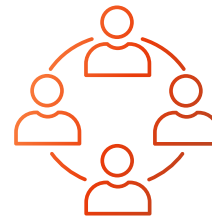
Will our school have any representation on the LLT board of directors?

Yes. Your Chair of Governors (CoG) will automatically become a director upon conversion and will be part of the director board and sub-committee meetings.

We also expect to have a LGB representative from each school within our Business & Management Committee, although this typically is not the CoG, to ensure we have breadth of representation.

Will the structure or format of our governor meetings change?

Each LLT LGB meet termly and this is the schedule we will expect your LGB to follow too. The LLT Executive Principal should be invited to all LGB meetings but it is unlikely they will attend every one once your school is embedded within the LLT structure.

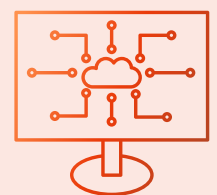


What about governor visits? What do they look like?

LLT are particularly passionate about governor visits. They are the means with which leaders and governors can identify evidence of impact regarding actions taken to achieve the school's priorities as detailed in its School Development Plan. It also allows governors to hear our Pupil and Staff Voice first hand - one of the most rewarding aspects of any governance role.

Monitoring visits must have a strategic rather than operational focus and we expect every LGB member to visit their school termly to look at a particular aspect of school provision.

Visits are carried out individually, although newly recruited LGB members will often conduct their first visit with a more experienced governor to understand the focus and approach to take.





We actively discourage group learning walks/visits - they just don't enable LGBs to focus on strategy, instead allowing governors to get bogged down in operational matters that really should not concern them.

LLT have a uniform approach to visit reporting too with feedback forms that will be provided to you on conversion which each governor should complete following their visit. Every visit report will be accessible to every other LLT LGB member to allow transparency, parity and knowledge building across all our governance staff.

What about our Board meetings, who clerks them?

Each LGB should appoint a local representative to clerk their LGB meetings - creating agendas, taking and producing minutes as well as collating the materials for the meeting. They will be expected to work closely with the LLT Governance Professional.

Our LLT Governance Professional will manage your LGBs GovernorHub account, communications between governance staff, training, recruitment and onboarding of new LGB members.



Where can I find out more about....?

LLT subcommittees: [Committees of the directors](#)

LLT Directors: [Directors](#)

LLT articles of association, terms of reference and scheme of delegation:

[Governance arrangements](#)